



**CHILL ATTIC**

# COMPANY PROFILE

A CAPSULE HOME  
YOUR THIRD SPOT



# ABOUT

## CHILL ATTIC

*Dedication. Expertise. Passion.*

The establishment of Chill Attic holds great importance as it aims to transcend the limitations posed by diverse and challenging terrains. This venture is dedicated to environmentally sustainable development and the utilization of intelligent ecological cabins.

The core objective of Chill Attic is to offer a lifestyle that seamlessly blends with the natural surroundings, providing residents with the enchanting experience of "living in the midst of breathtaking landscapes."

Through innovative construction techniques and a commitment to ecological principles, Chill Attic seeks to create a harmonious coexistence between modern living spaces and the beauty of the environment. In doing so, it aspires to not only break free from geographical constraints but also to set a new standard in eco-conscious, intelligent, and aesthetically pleasing housing solutions.

CHILL ATTIC

Contact Mobile in Australia

0452 198 819 | 0410 730 977

**Email:** [info@chillattic.com.au](mailto:info@chillattic.com.au)

**Website:** [chillattic.com.au](http://chillattic.com.au)

**Address for display centre:** 356 Parramatta Road

BURWOOD NSW 2134







# FACTORY DETAILS

CHILL ATTIC is dedicated to advancing scientific and technological innovation, boasting top-tier design teams and manufacturing facilities. Our accommodation products provide enhanced possibilities for both travel and lifestyle.

The product's primary framework consists of a robust steel structure with a specialized design that enhances wind resistance and resilience against shocks. High-strength composite materials and external galvanized plates are the primary materials, ensuring safety and strong protection. Skilled soft flight designers develop space design concepts for clients, while a professional planning team tailors plans to meet project and customer needs, encompassing consultation, comprehensive planning, space design, and supplementary facilities, including construction diagrams, among other aspects.





# TEAM INTRODUCTION

## All -in -one structure system



### 1. Super strong steel mixed, 100 years of quality

The main structure of the product is a special steel structure with strong structure design, which strengthens windproof and shock resistance. The main material uses high-strength composite materials and aluminum alloy shells, with high safety and strong protection. Typhoon above level 12, anti-corrosion prevention and moisture. Special thermal insulation and cold design, without fear of environmental conditions, can be minimum to minus 30 degrees.

### 2. Quality design, sucking and drainage

Prefabricated hostels, moving at any time, convenient and fast, personalized design in line with young people's curiosity about novelty, bringing a unique living experience. Through the regional culture of attractions, the national color integrated cabin uses healthy and high-quality environmental protection materials to build a convenient and fast green ecological house that can breathe, which is a building that makes people happy and enhances happiness, and meets people's demands in the landscape.

### 3. Overall prefabrication, fast installation

The intelligent integrated cabin is realized in the factory for 40 days of production, installation and disassembly, integrated transportation, 2 hours on-site installation, no secondary decoration, shortening the construction period, equipped with a full smart home appliance control system, a panoramic view, and its own traffic.

### 4. Unlimited terrain, ecological development

The all-in-one cabin does not play the foundation. It is suitable for all terrain, applicable mountains, seaside, and even sea. It does not destroy the ecological environment, no building waste, and ecological environmental protection. Further saving the foundation costs and reducing the requirements for geological conditions.

HOUSING SYSTEM

FLOOR SYSTEM

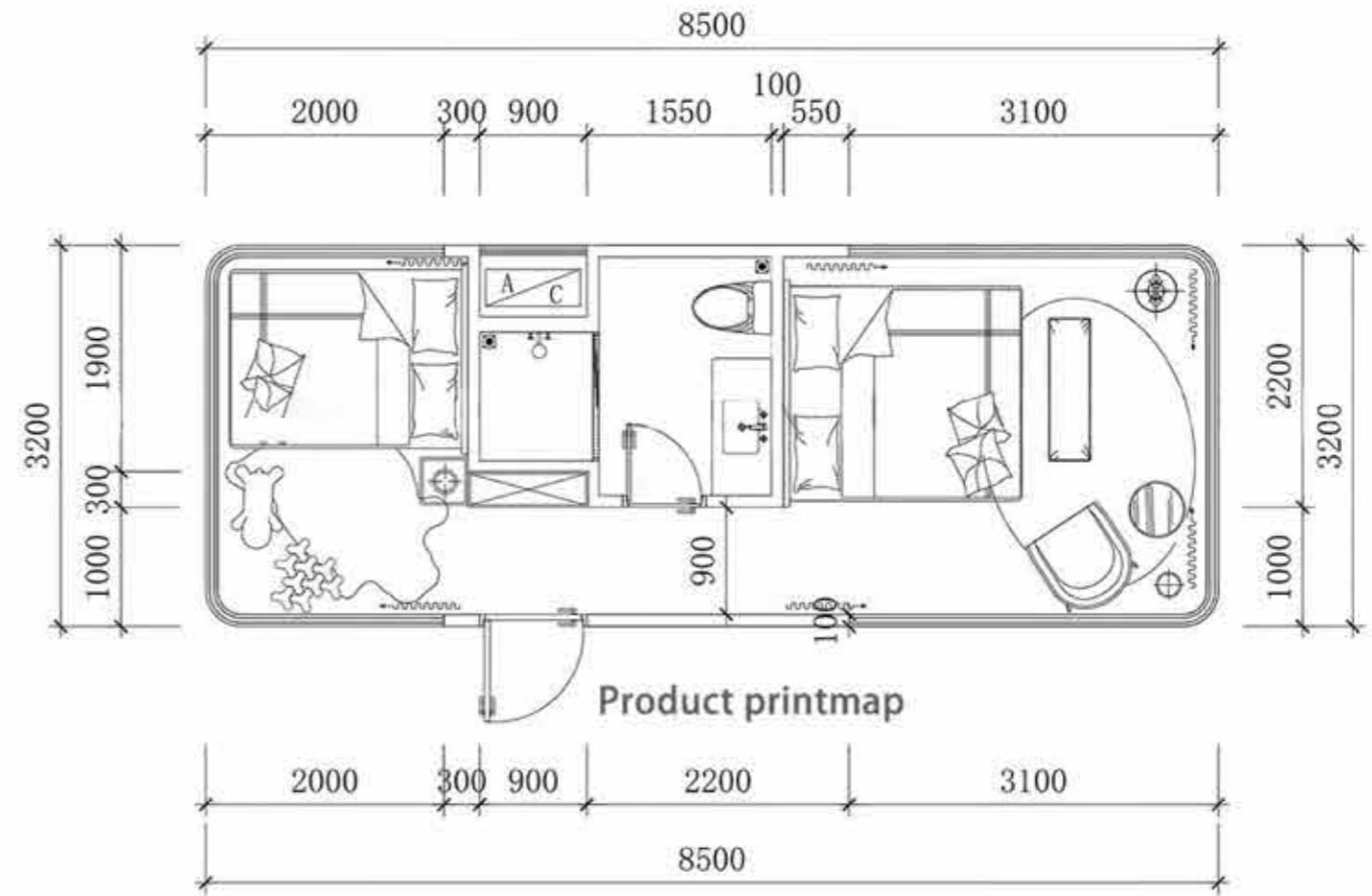
WALL SYSTEM



# PRODUCT SERIES CC85



Note: The product continues to be upgraded and iterates.



MODEL	CC85	MAXIMUM NUMBER	4-6 PEOPLE
DIMENSIONS	L8500mm、W3200mm、H3200mm	MAXIMUM ELECTRICITY	12KW
LAND	27.2m <sup>2</sup>	INDOOR GROUND LOAD	500KG/m <sup>2</sup>

## PRODUCT FEATURES

The space compartment uses a metal shell with a sense of technology and a single cabin with a 270-degree tempered glass; the viewing view of the viewing balcony is unobstructed; the whole house adopts Xiaomi intelligent control system, high quality, low energy consumption, and full intelligence. The products have been put into production in batches, and the product testing waterproof, insulation, insulation, and materials have reached international standards.

































CHILL ATTIC CHILL ATTIC CHILL ATTIC CHILL ATTIC CHILL ATTIC





CHILL ATTIC CHILL ATTIC CHILL ATTIC CHILL ATTIC CHILL ATTIC













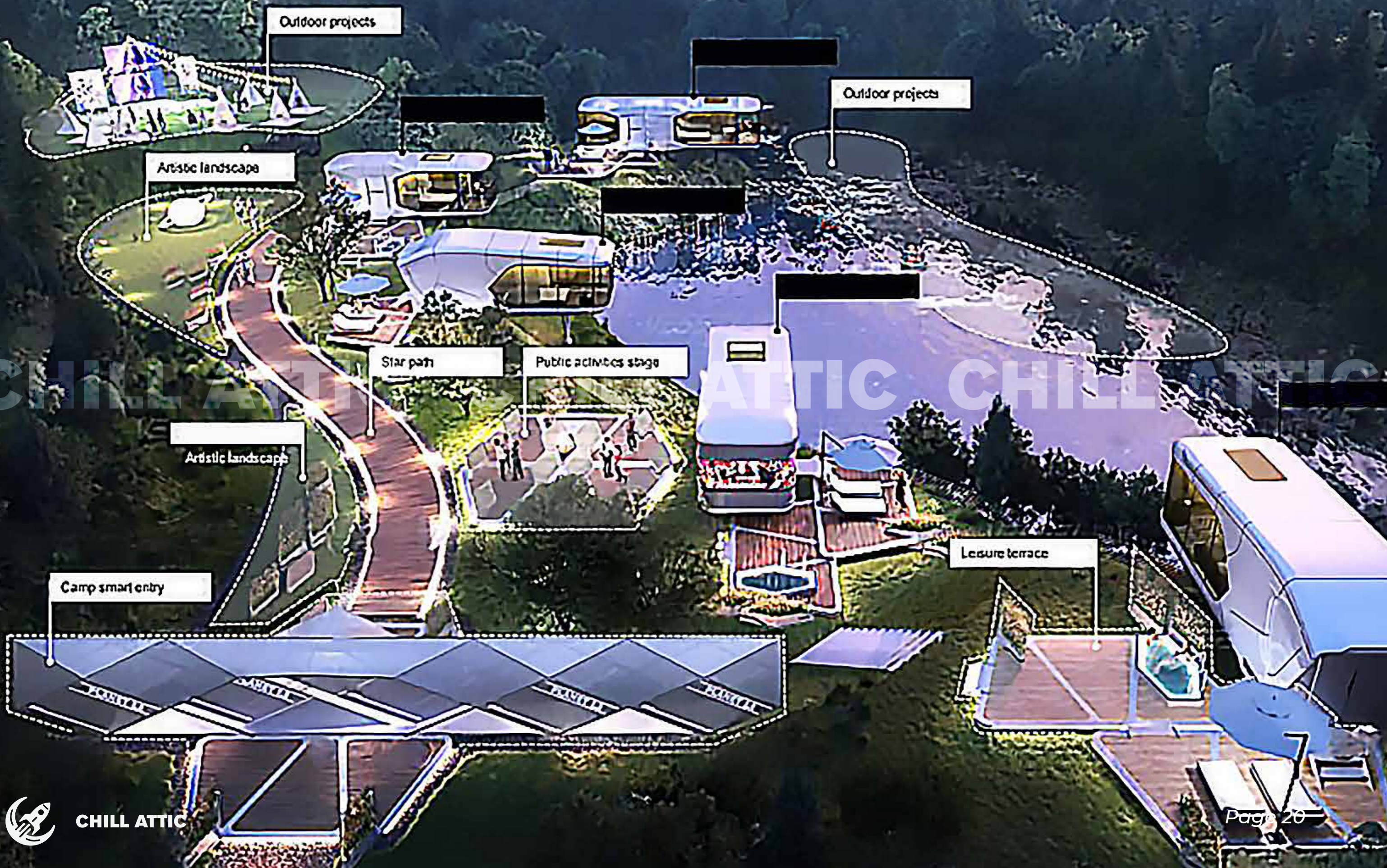


CHILL ATTIC CHILL ATTIC CHILL ATTIC









Outdoor projects

Artistic landscape

Outdoor projects

Star path

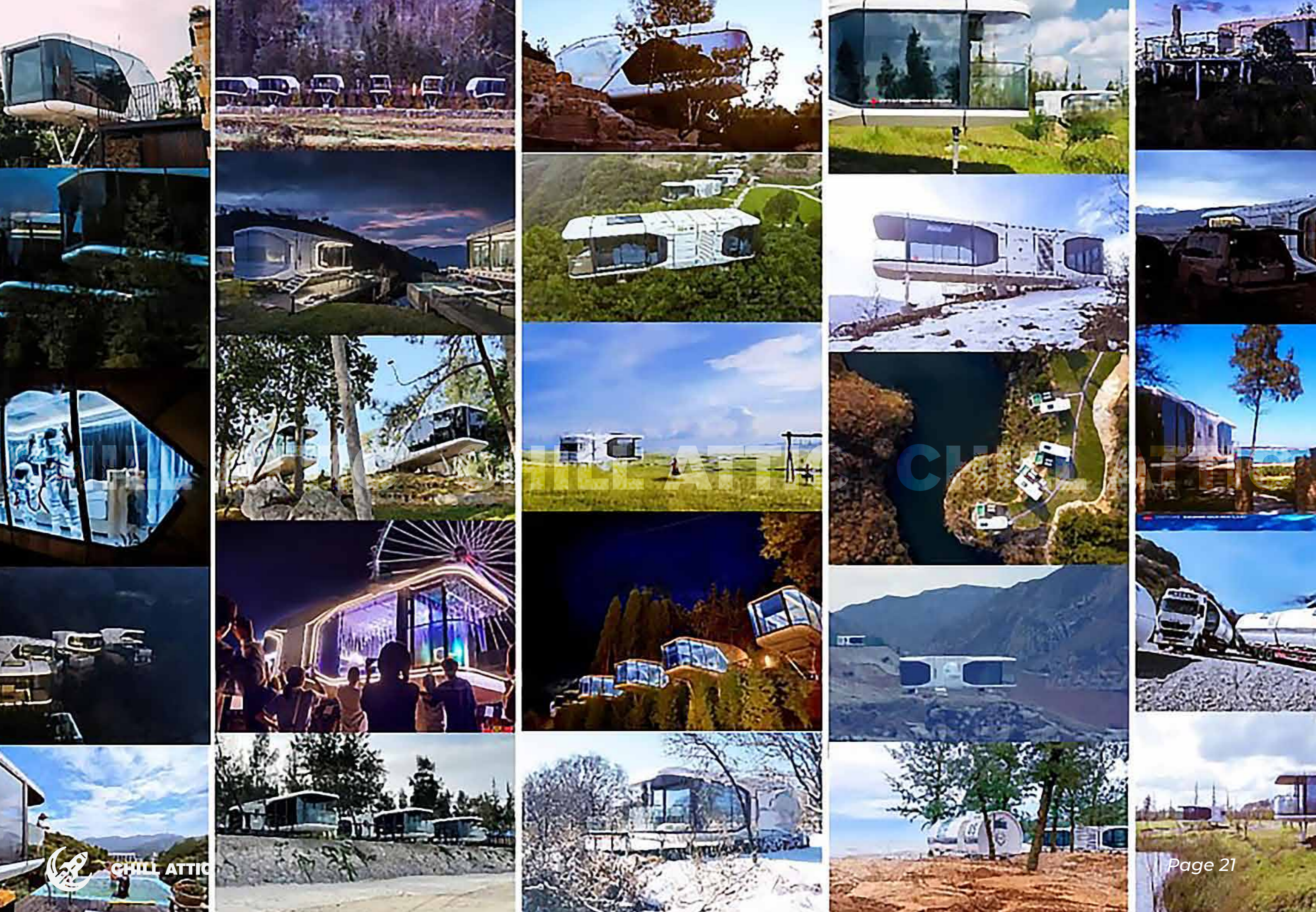
Public activities stage

Artistic landscape

Leisure terrace

Camp smart entry

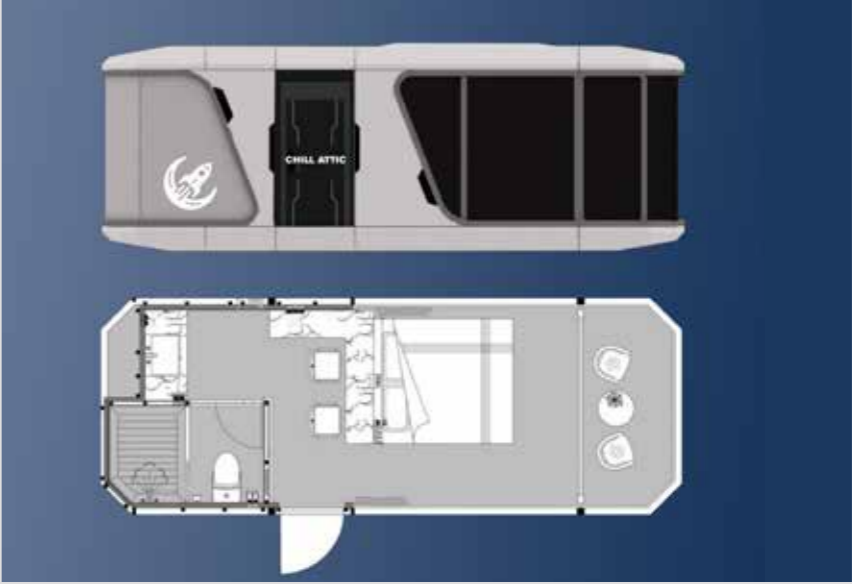










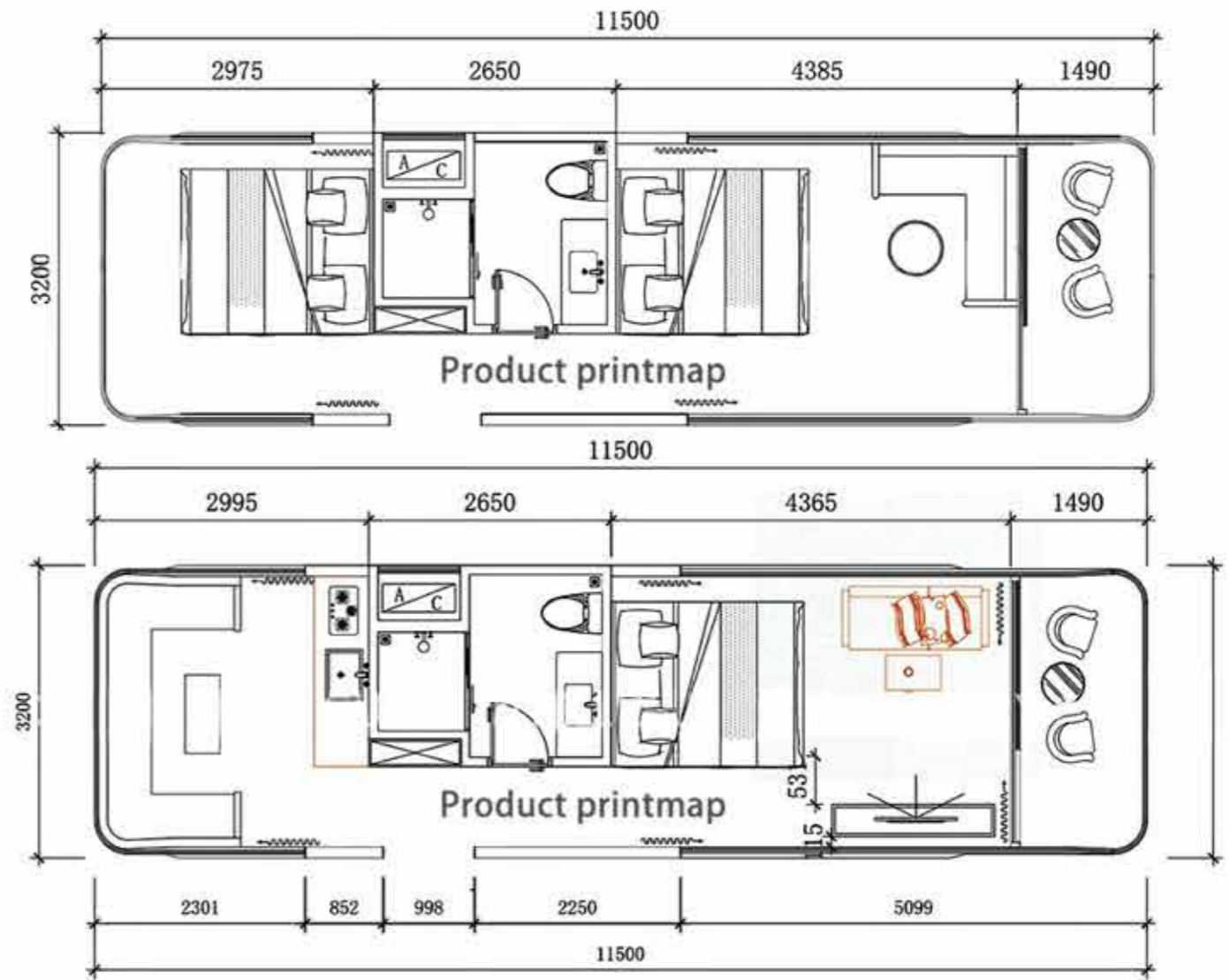




# PRODUCT SERIES CC115



Note: The product continues to be upgraded and iterates.

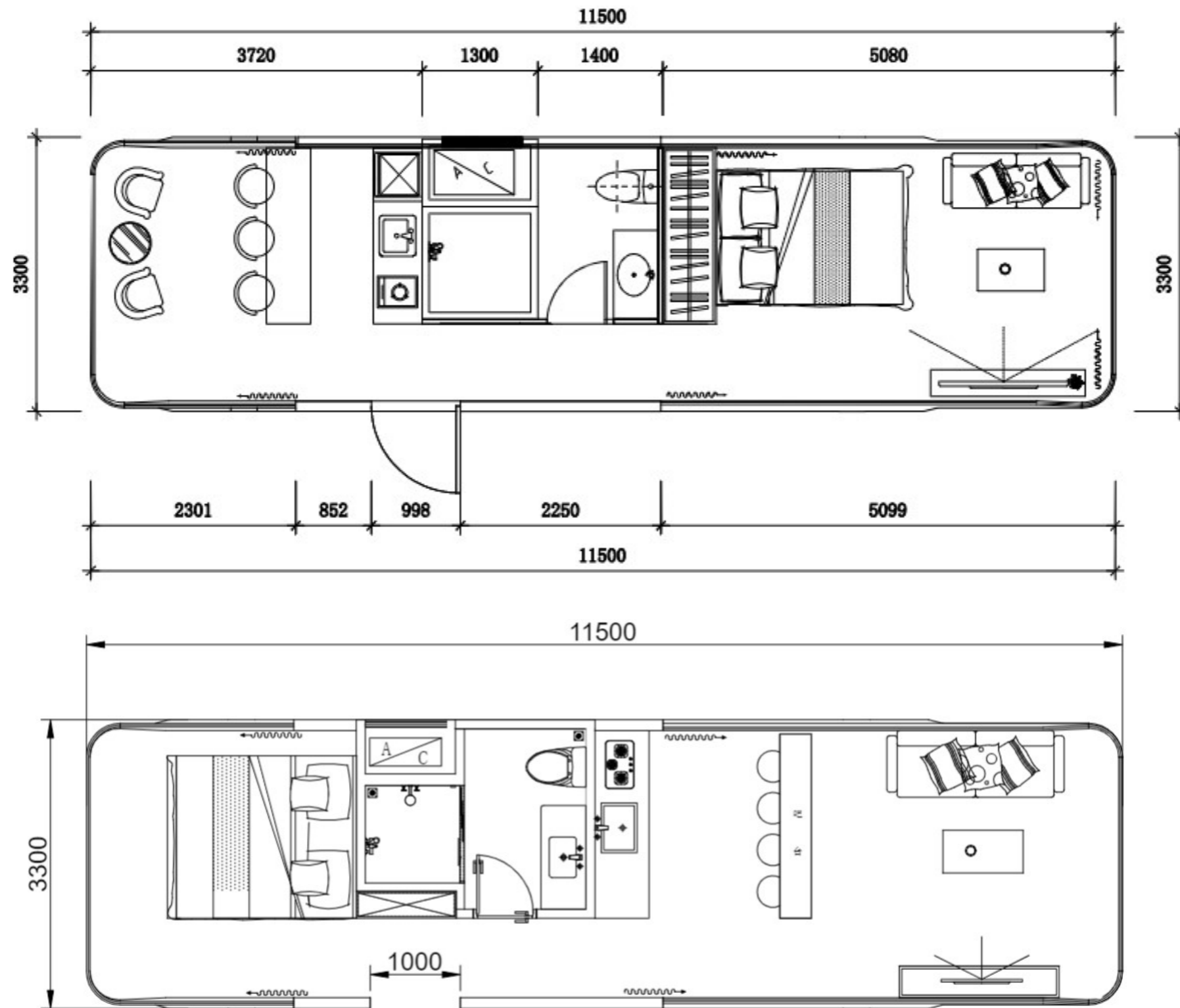


MODEL	CC115	MAXIMUM NUMBER	4-8 PEOPLE
DIMENSIONS	L11500mm, W3200mm, H3200mm	MAXIMUM ELECTRICITY	12KW
LAND	36.8m <sup>2</sup>	INDOOR GROUND LOAD	500KG/m <sup>2</sup>

## PRODUCT FEATURES

The national color "space cabin" uses light steel structure assembly, aviation composite integrated material combination, and gives intelligent systems, beautiful shapes, insulation and insulation, especially the "space capsule" floor glass to three layers of hollow coating mirror glass to make "The "space cabin" building is integrated with the surrounding landscapes to form a beautiful landscape.

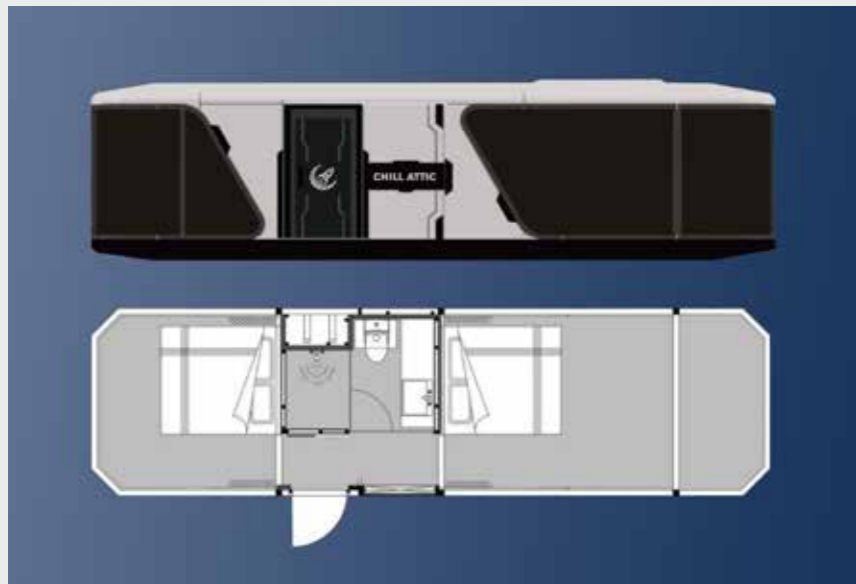














# PRODUCT NAME

# Cargo Cottage



- 1 Steel structure (galvanized + white paint)
- 2 50mm EPS sandwich panel wall panel (double-sided 0.426mm steel plate)
- 3 100mm insulating glass wool in the middle of the roof, 50mm EPS sandwich panels on both sides
- 4 15mm bamboo glue floor + 3.5mm lock PVC floor glue
- 5 Aluminum alloy double-glazed upper-hung window
- 6 Exterior door double sliding glass door
- 7 EPS sandwich panel door with ball lock inside
- 8 Glass shower room with shower + toilet + washbasin with cabinet + mirror + towel rack + exhaust fan
- 9 Outdoor retractable canopy + porch light
- 10 Adjustable horizontal support + pulley
- 11 Electrical system (including LED lights, sockets, switches)
- 12 Including indoor plumbing systems



FOLDING SIZE  
EXPANDED SIZE

W2200mm, L 5800mm, H2500mm  
W6300mm, L5800mm, H2500mm

## PRODUCT CASE

The Expandable container is easy to assemble and can be moved frequently, has enough usable area and spacious living space, all accessories are assembled at the factory, and the house can be folded to save space when transporting. When transported to its destination, it can be quickly and easily installed on the ground.

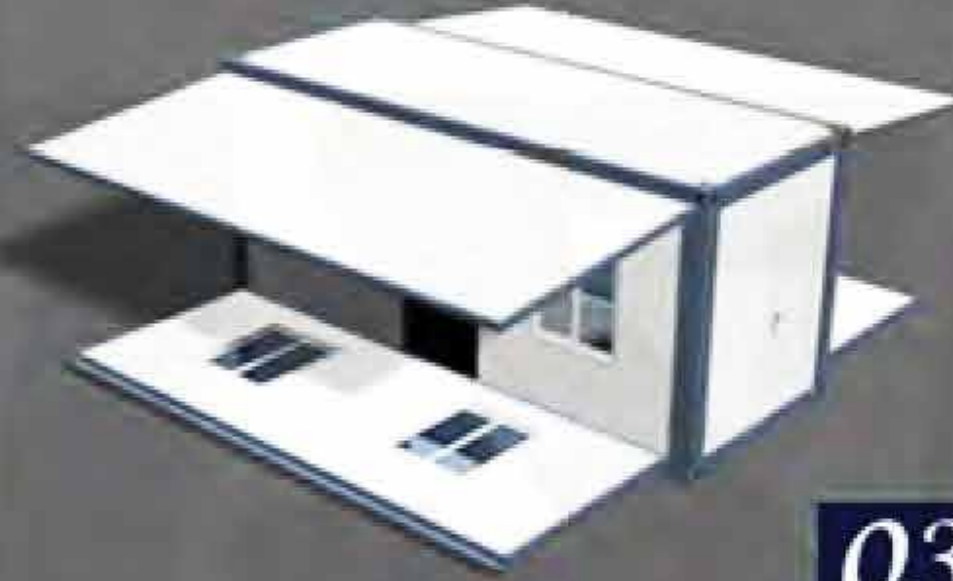




01



02



03

CHILL ATTIC CHILL ATTIC CHILL ATTIC



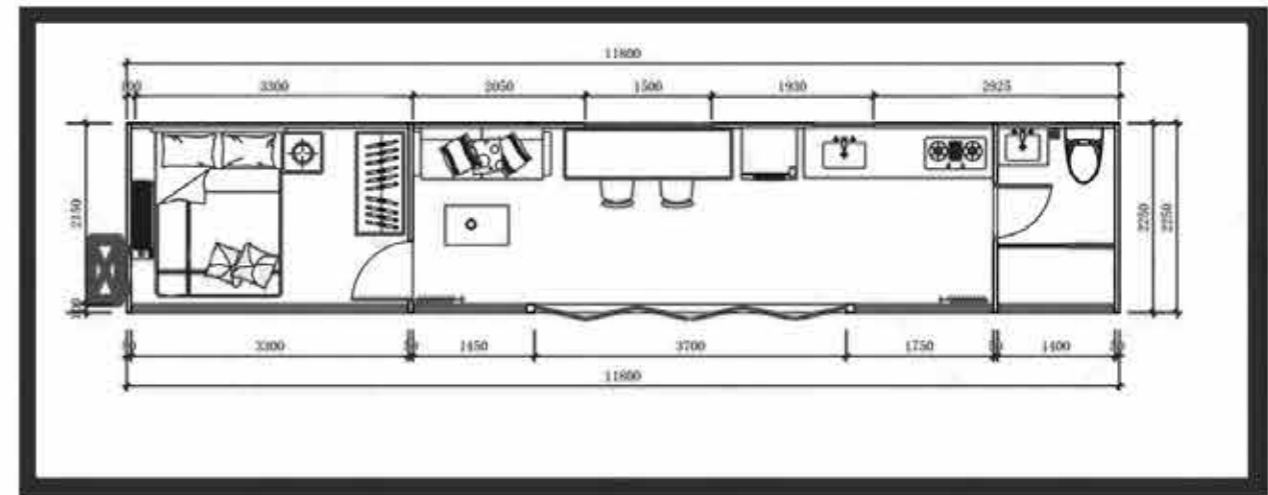
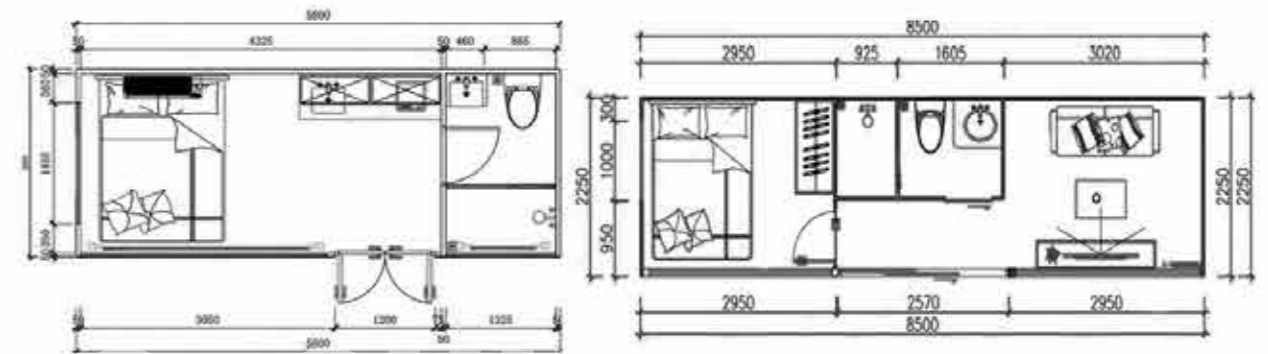
04



05



# PRODUCT NAME VV85



DIMENSIONS	L5800, W2250, H2450MM	LAND	13m <sup>2</sup>	MAXIMUM NUMBER	1-2 people
DIMENSIONS	L8500, W2250, H2450MM	LAND	19m <sup>2</sup>	MAXIMUM NUMBER	2-4 people
DIMENSIONS	L11500, W2250, H2450MM	LAND	26.5m <sup>2</sup>	MAXIMUM NUMBER	4-6 people





Glass steel apple cabin. Available in three different sizes.  
Can be selected according to their own needs.



Avoid disturbing the foundation, utilize the entire terrain without causing harm to the ecological environment, eliminate construction waste, prioritize ecological and environmental preservation. Factory-based construction within 40 days, assembly and disassembly, efficient transportation, 2-hour on-site installation, no need for subsequent modifications, reducing construction time. Equipped with a comprehensive smart home appliance control system, panoramic views, and self-sustaining transport.





## VACATION AND WELLNESS TOURISM

CHILL ATTIC space capsule homes can venture into remote natural settings, offering a close connection with nature. They seamlessly integrate with endeavours like vacation getaways, wellness tourism, and rural revitalization projects, providing supportive lodging solutions that harmonize perfectly with these initiatives.



## WILD LUXURY CAMP

CHILL ATTIC space capsule homes offer both privacy and security, delivering a comfortable living experience that aligns with the contemporary desire for wilderness and luxury, providing an escape from the urban commotion and catering to personalized travel preferences.



## UPGRADE OF B&B

CHILL ATTIC space capsule homes can efficiently enhance and expand the initial B&B to create a viral online presence, adapting to local conditions.



## HIGHLIGHTS OF SCENIC SPOTS

CHILL ATTIC space capsule homes boast a splendid aesthetic that harmonizes with the scenic surroundings, making them suitable for a variety of environments. They feature 270-degree panoramic glass, ensuring an exceptional viewing experience.



## MOBILE COMMERCIAL USE

CHILL ATTIC space capsule homes boast a splendid aesthetic that harmonizes with the scenic surroundings, making them suitable for a variety of environments. They feature 270-degree panoramic glass, ensuring an exceptional viewing experience.







### **Transportation**

From factory to port and from port to project site, product should be transported on a delivery vehicle (standard semi-trailer, Length: 13.5m, Width: 3m, Height:  $\leq 4.2$ m). Beside, it is shipped by a flat rack-container overseas.

### **Hoisting**

After arriving the project site, the product should be hoisted by the local crane service. The weight of the product is between 6 to 10 tons. It is recommended to arrange  $\geq 25$  tons for loading and unloading.

### **Installation**

Before installation, the plumbing system and electrical system and foundation should be prepared in accordance with the standard drawings provided by our company. Place the product in the designated location and test the performance after the installation is done.









# PROJECT PRODUCT PRODUCTION

